



Realtors • Auctioneers • Advisors

AUCTION

LEADING THE INDUSTRY SINCE 1945

**WEDNESDAY – JUNE 1, 2022 – 11:00 AM
REAL ESTATE SELLS AT 12:00 PM**

**Lees Estate Auction
Manufactured Home – Shop Building On 6 Acres
Residential Or Commercial
Chain Link Fenced - Pear & Apple Trees
HARRISVILLE TWP. – MEDINA COUNTY, OH - CLOVERLEAF LSD**

Also Selling: Shop Tools – Car Parts – Antiques – Furniture – Loads Of Misc.
On-Site & Online Bidding Available On Real Estate

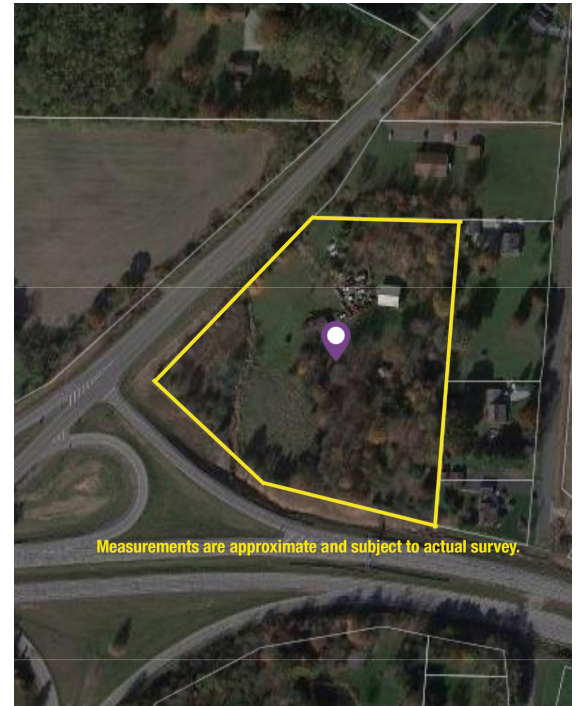
ALL SELLS TO SETTLE THE ESTATE. LOCATION:

8255 Lafayette Rd., Lodi, OH 44254

Directions: Take Rt. 224 west of I-71 to Lafayette Rd/I-42 exit and just north to auction. Watch for KIKO signs.



Open house day of auction 10:00 AM-12:00 PM



Information is believed to be accurate but not guaranteed. KIKO Auctioneers

800-533-5456 | kikoauctions.com



REAL ESTATE: Features a good, manufactured ranch home built in 1999 having 3 bedrooms, 2 full baths, full walkout basement, LP furnace/A/C, wood burner and full bath. Good 40'x40' shop building w/ (2) overhead doors & heat. 16'x16' picnic pavilion, chain link fenced 6 acres, apple & pear trees, and small stream. Just off the expressway, convenient location! Check it out! Open house day of auction 10:00 AM-12:00 PM.

TERMS ON REAL ESTATE: 10% down auction day, balance due at closing. A 10% buyer's premium will be added to the highest bid to establish the purchase price. Any desired inspections must be made prior to bidding. All information contained herein was derived from sources believed to be correct. Information is believed to be accurate but not guaranteed.

TOOLS - CAR PARTS: Various car parts, many foreign - early Mercedes engine & trans. - Mobil gas sign - several toolboxes - loads of hand tools - shop hoist - car ramps - MGA sheet metal - straps - gas chipper - Echo chainsaw - 1974 Husqvarna 125 MX dirt bike - Harley golf cart - (2) engine stands - ALFA Romeo rims & tires - pneumatic tools - traffic lights - battery chargers - portable air tank - Snapper riding mower - Rigid portable work stand - push mower - Power Arc Plasma 25 turbo cutter - Lincoln MIG Pak 15 welder - power tools - bench grinder - vises - Husqvarna zero-turn mower - alum. canoe - early bikes - jack stands - rims & tires - Ford V-8 engine - West Coast Chopper bike - pneumatic tire changer - air compressor - elec. winches - dolly - car dolly - lg. band saw - (3) Ford tailgates - alum. ramps - gas pressure washer - Craftsman 230-amp welder - ladder - Marty commercial lawn mower - loads of hardware.

ANTIQUES - FURNITURE: (2) grandfather clocks - curio cabinets - clocks - machinist box - western saddles - cast iron skillets - DVDs - Harley & car books - butter churn - desk - Victor Victrola - bookshelves - smoker - household goods & more!

TERMS ON CHATTELS: Driver's license or State ID required to register for bidder number. Cash, Check, Debit Card, Visa, or MasterCard accepted. 4% buyer's premium on all sales, 4% waived for cash or check when paid sale day. Information is believed to be accurate but not guaranteed. Multi Par auction process may be used.

NOTE: Automobiles, trucks, & trailers selling at separate online auction beginning May 13th. Visit www.kiko-auctions.com for full details.

AUCTION BY ORDER OF: Edward A.Z. Lees, Administrator of the Budd R. Lees Estate, Medina Co. Probate case #2022 01 ES 00006



Auctioneer/Realtor®
MATTHEW P. KIKO
330-327-9617
mattkiko@kikocompany.com

800-533-5456 | kikoauctions.com

