



# AUCTION

LEADING THE INDUSTRY SINCE 1945

Realtors • Auctioneers • Advisors

**FRIDAY – MAY 20, 2022 – 12:00 PM**

## 67-Acre Farm

**4-Bedroom Farmhouse – 4,700 Feet Frontage**

**40 Acres Tillable – 27 Acres Wooded**

**Offered In 8 Parcels & Entirety**

**Mahoning County – Beaver Twp. – South Range Schools**

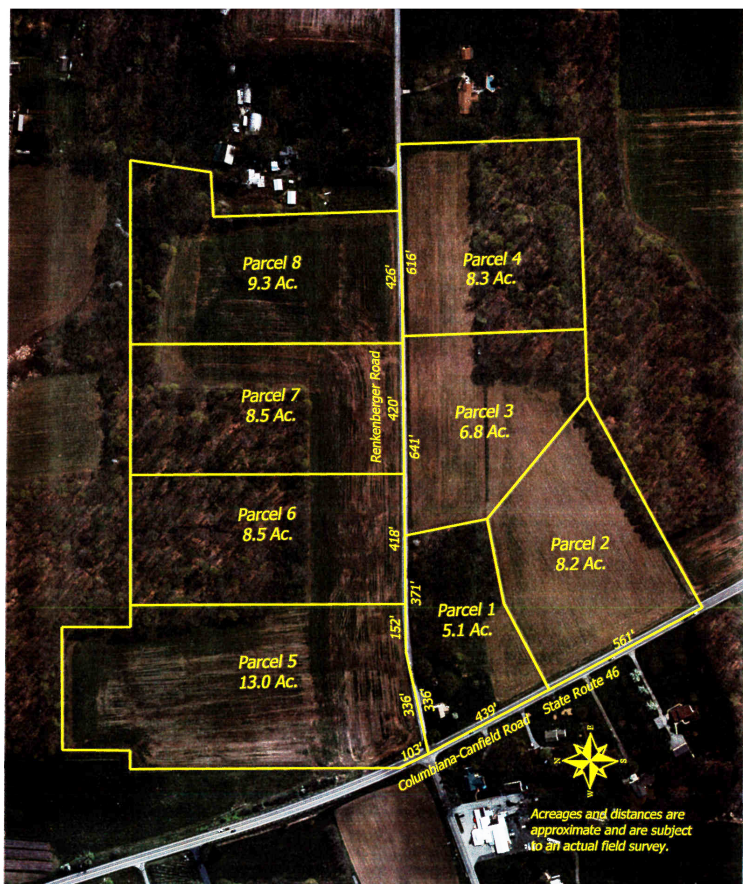
On-Site And Online Bidding Available

Absolute auction, all sells to the highest bidder(s). Location:

**3495 Renkenberger Rd., Columbiana, OH 44408**

Directions: Take Columbiana Canfield Rd. (OH-46) north of Columbiana, OH to Renkenberger Rd. or south of Rt. 11. Watch for KIKO signs.

**OPEN HOUSE: WEDNESDAY  
MAY 18, 2022  
11:00 AM-12:00 PM ONLY**



**ENTIRETY:** Parcel #051520002.000 & #051520006.00 – Beautifully rolling 67.71-acre farm with century farmhouse. With over 4,700 feet road frontage on Renkenberger Rd & Columbiana Canfield Rd., this farm is an ideal investment, farming or building tract.

Information is believed to be accurate but not guaranteed. KIKO Auctioneers

**800-533-5456 | kikoauctions.com**







2722 Fulton Dr. NW, Canton, OH 44718  
kikoauctions.com

**FRIDAY – MAY 20, 2022 – 12:00 PM**

**67-ACRE FARM  
4-BEDROOM FARMHOUSE  
4,700 FEET FRONTAGE  
40 ACRES TILLABLE  
27 ACRES WOODED  
OFFERED IN 8 PARCELS & ENTIRETY**

**PARCEL #1:** Century farmhouse situated on 5.1 acres. 439' frontage on Columbiana Canfield Rd. and 707' frontage on Renkenberger Rd. Main level has hardwood floors, living room, family room, full bath, bedroom, office and large eat-in kitchen. Second level (was set up as an apartment) has full bath, two bedrooms and kitchen. Third level has additional bedroom and storage. Full unfinished basement with gas FA modern furnace and breaker electric boxes. House has slate roof, vinyl siding, replacement windows and well/septic. Home was built in 1905 having approx. 2,368 SF.

**PARCEL #2:** 8.2 acres of vacant land, mostly tillable. 561' frontage on Columbiana Canfield Rd.

**PARCEL #3:** 6.8 acres of vacant land, mostly tillable. 641' frontage on Renkenberger Rd.

**PARCEL #4:** 8.3 acres of vacant land, 75% wooded. 616' frontage on Renkenberger Rd.

**PARCEL #5:** 13 acres of vacant land, mostly tillable. 103' frontage on Columbiana Canfield Rd. and 488' frontage on Renkenberger Rd.

**PARCEL #6:** 8.5 acres of vacant land, 75% wooded. 418' frontage on Renkenberger Rd.

**PARCEL #7:** 8.5 acres of vacant land, 50% wooded. 420' frontage on Renkenberger Rd.

**PARCEL #8:** 9.3 acres of vacant land, mostly tillable. 426' frontage on Renkenberger Rd.

**AUCTIONEERS NOTE:** Great opportunity to purchase an excellent piece of land. Farm will be offered separate and together, selling whichever way it brings the most money. All mineral rights to transfer to new owners, no current income. Walk land at your convenience. Call Jeff Kiko with any questions on how to buy.

**TERMS ON REAL ESTATE:** 10% down auction day, balance due at closing. A 10% buyer's premium will be added to the highest bid to establish the purchase price. Any desired inspections must be made prior to bidding. All information contained herein was derived from sources believed to be correct. Information is believed to be accurate but not guaranteed. Property to be offered as a Multi Par auction and sold whichever way it brings the most.

**AUCTION BY ORDER OF:** Karin A. Disalvo, POA For Elizabeth A. Liska



Auctioneer/Realtor®  
**JEFF R. KIKO**  
330-206-1079  
jeffkiko@kikocompany.com

**800-533-5456 | kikoauctions.com**

