



AUCTION

LEADING THE INDUSTRY SINCE 1945

Realtors • Auctioneers • Advisors

SATURDAY – MAY 7, 2022 – 11:00 AM

DeHoff Estate Auction

64+ ACRES WOODED LAND

Loads Of Wildlife – Offered In 3 Parcels

Osnaburg Twp. – Stark Co., OH – Osnaburg Local Schools

On-Site Auction With Online Bidding Available

All sells to settle the estate. Location:

HEDGE ROSE AVE. SE, EAST CANTON, OH 44730

Directions: From East Canton, OH take Wood Ave. south to Orchardview Dr., then go west to Argyle Rd., then south to Hedge Rose and auction. Watch for KIKO signs.



Information is believed to be accurate but not guaranteed. KIKO Auctioneers

800-533-5456 | kikoauctions.com



Stark Co. parcel #3700845 features 64+ acres mostly all wooded land on both sides of Hedge Rose Ave. Loads of deer and turkey. Mineral rights owned by seller will transfer subject to leases of record. Some frontage had been previously stripped and partially reclaimed. Walk this land at your convenience. Osnaburg Local Schools. Offered in parcels and as entirety, selling whichever way brings the most.

DIVIDED AS FOLLOWS:

PARCEL #1: 26.2 acres open and wooded land. Nice elevation. Approx. 960’ frontage.

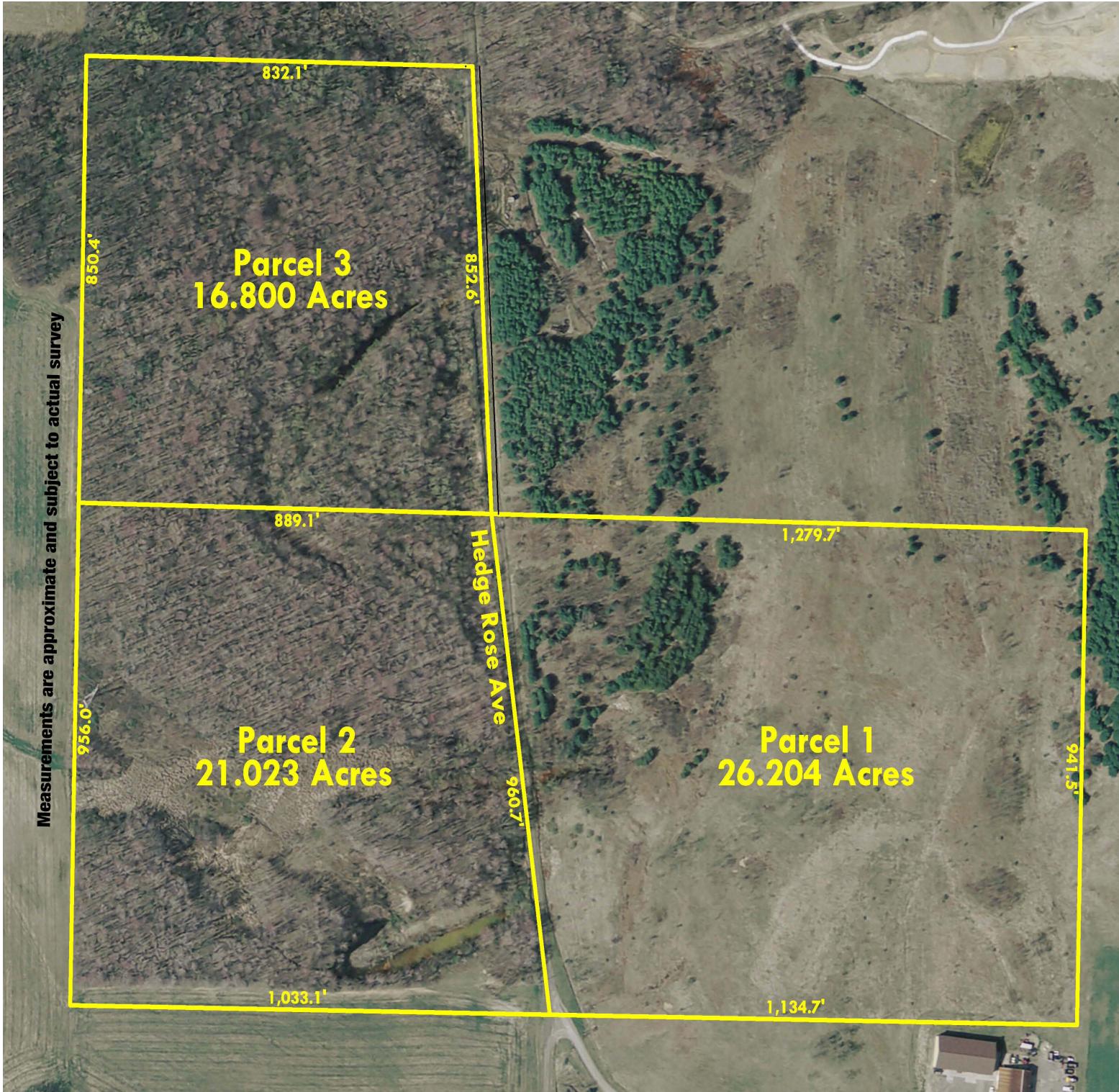
PARCEL #2: 21 acres mostly wooded land and small strip pond. Approx. 960’ frontage.

PARCEL #3: 16.8 acres all wooded land. 852’ road frontage.

NOTE: Call George Kiko, 330-418-1095 for help with financing!

TERMS ON REAL ESTATE: 10% down auction day, balance due at closing. A 10% buyer’s premium will be added to the highest bid to establish the purchase price. Any desired inspections must be made prior to bidding. All information contained herein was derived from sources believed to be correct. Information is believed to be accurate but not guaranteed. Property to be offered as a Multi Par auction and sold whichever way it brings the most.

AUCTION BY ORDER OF: Carol Freitag, Executrix for the Dolores M. DeHoff Estate, Stark Co. Probate case #242199



Auctioneer/Realtor®
GEORGE P. KIKO
330-418-1095
george@kikocompany.com

