



AUCTION

LEADING THE INDUSTRY SINCE 1945

Realtors • Auctioneers • Advisors

TUESDAY – APRIL 19, 2022 – 5:30 PM

Gingerich Land Auction

TWO VACANT LAND TRACTS – BOTH ALL TILLABLE – MINERAL RIGHTS TRANSFER – EAST MEAD TWP. – CRAWFORD CO. PA
PARCEL #1 – 18.9 ACRES LAYS ON NORTH SIDE OF ROAD - OVER 700' FRONTAGE

PARCEL #2 – 19.2 ACRES LAYS ON SOUTH SIDE OF ROAD - OVER 900' FRONTAGE – DIRECTLY ACROSS FROM PARCEL #1
SOLD ON-SITE – BUY ONE OR BOTH
SOLD LIVE ON LOCATION OR BID ONLINE

Absolute auction, all sells to the highest bidders on location:

E. OIL CREEK RD., GUYS MILLS, PA 16327

Directions: Take PA Rt. 27 east of Meadville approx. 6 miles to E. Oil Creek Rd. and right to auction or E. Oil Creek Rd. just west of SR 2011 (For GPS use 25705 E. Oil Creek Rd., Guys Mills, PA 16327). Watch for KIKO signs.



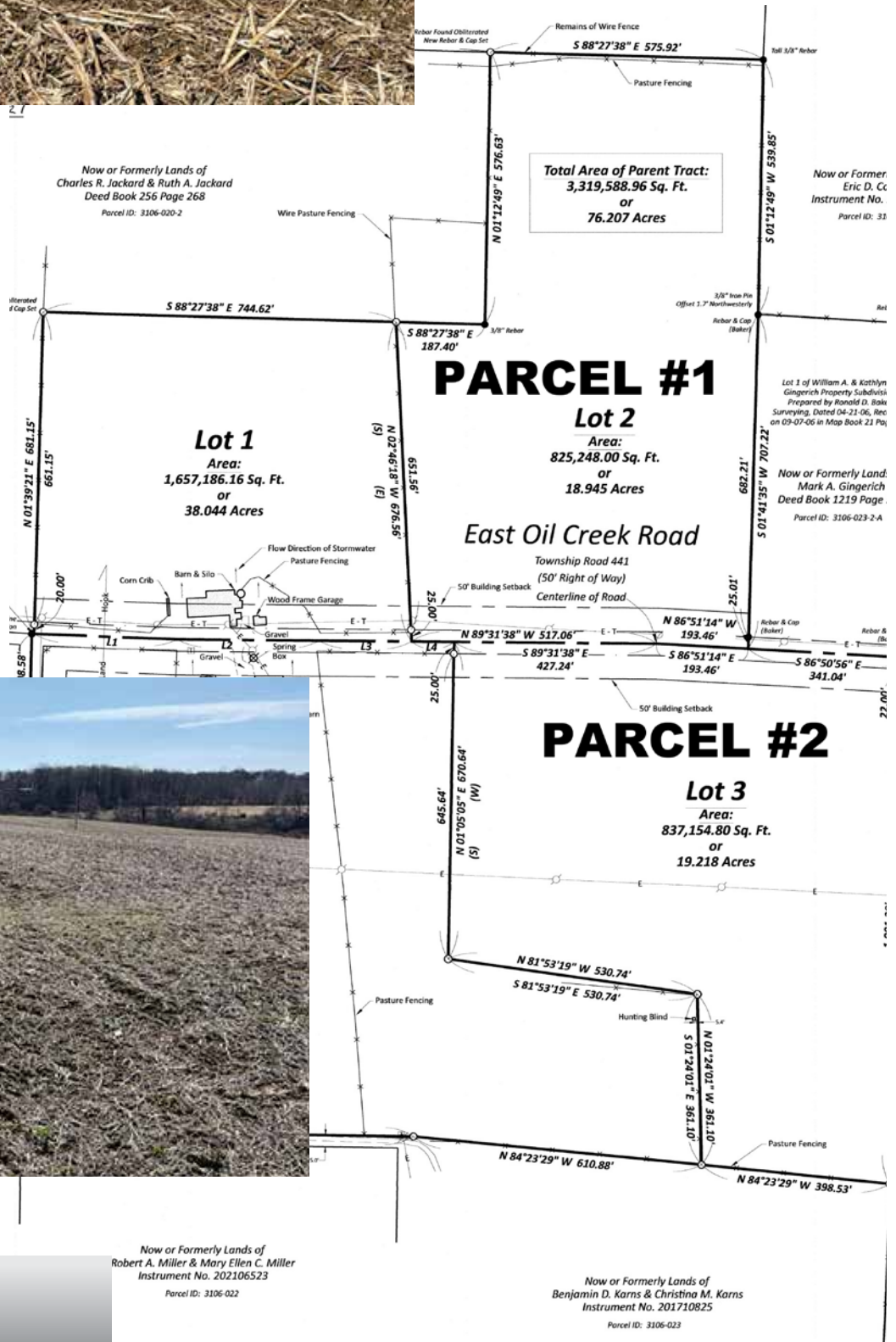
Information is believed to be accurate but not guaranteed. KIKO Auctioneers

800-533-5456 | kikoauctions.com



TERMS ON REAL ESTATE: 10% down auction day, balance due at closing. A 10% buyer's premium will be added to the highest bid to establish the purchase price. Any desired inspections must be made prior to bidding. All information contained herein was derived from sources believed to be correct. Information is believed to be accurate but not guaranteed. Property to be sold as Separate Parcels, Bidder's Choice, and not to be offered as an Entirety.

Auction By Order Of: Kathlyn M. Gingerich



Auctioneer/Realtor®
RUDY W. KIKO
 330-540-2416
 rudykiko@kikocompany.com

Now or Formerly Lands of
 Robert A. Miller & Mary Ellen C. Miller
 Instrument No. 202106523
 Parcel ID: 3106-022

Now or Formerly Lands of
 Benjamin D. Karns & Christina M. Karns
 Instrument No. 201710825
 Parcel ID: 3106-023

800-533-5456 | kikoauctions.com

