



AUCTION

LEADING THE INDUSTRY SINCE 1945

Realtors • Auctioneers • Advisors

THURSDAY – JULY 22, 2021 – 6:00 PM

Court Ordered Auction

**40-ACRE FARM WITH DILAPIDATED TWO-STORY FARMHOUSE
– 32 X 50 POLE BARN WITH 32 X 32 ADDITION – STREETS-
BORO CITY – PORTAGE CO. - SELLS AS UNIT – MINERAL RIGHTS
OWNED BY SELLER TO TRANSFER – GREAT LOCATION –
STREETSBORO SCHOOLS – ONLINE BIDDING AVAILABLE**

Sells on location:

1993 SR 303, STREETSBORO, OH 44241

Directions: From Rt 43 in Streetsboro, take Rt. 14 just east to SR 303 and east to address. Watch for KIKO signs.



Real Estate: Old dilapidated two-story farmhouse that needs torn down. 32' X 50' pole building with concrete and electric with 32' X 32' addition. 40 acres total. Approx. 22 acres tillable balance wooded. Lands lays real nice. 2 ponds. Private septic system, drilled water well plus hand dug water well. Great location.

TERMS ON REAL ESTATE: 10% down auction day, balance due at closing. A 10% buyer's premium will be added to the highest bid to establish the purchase price. Any desired inspections must be made prior to bidding. All information contained herein was derived from sources believed to be correct. Information is believed to be accurate but not guaranteed.

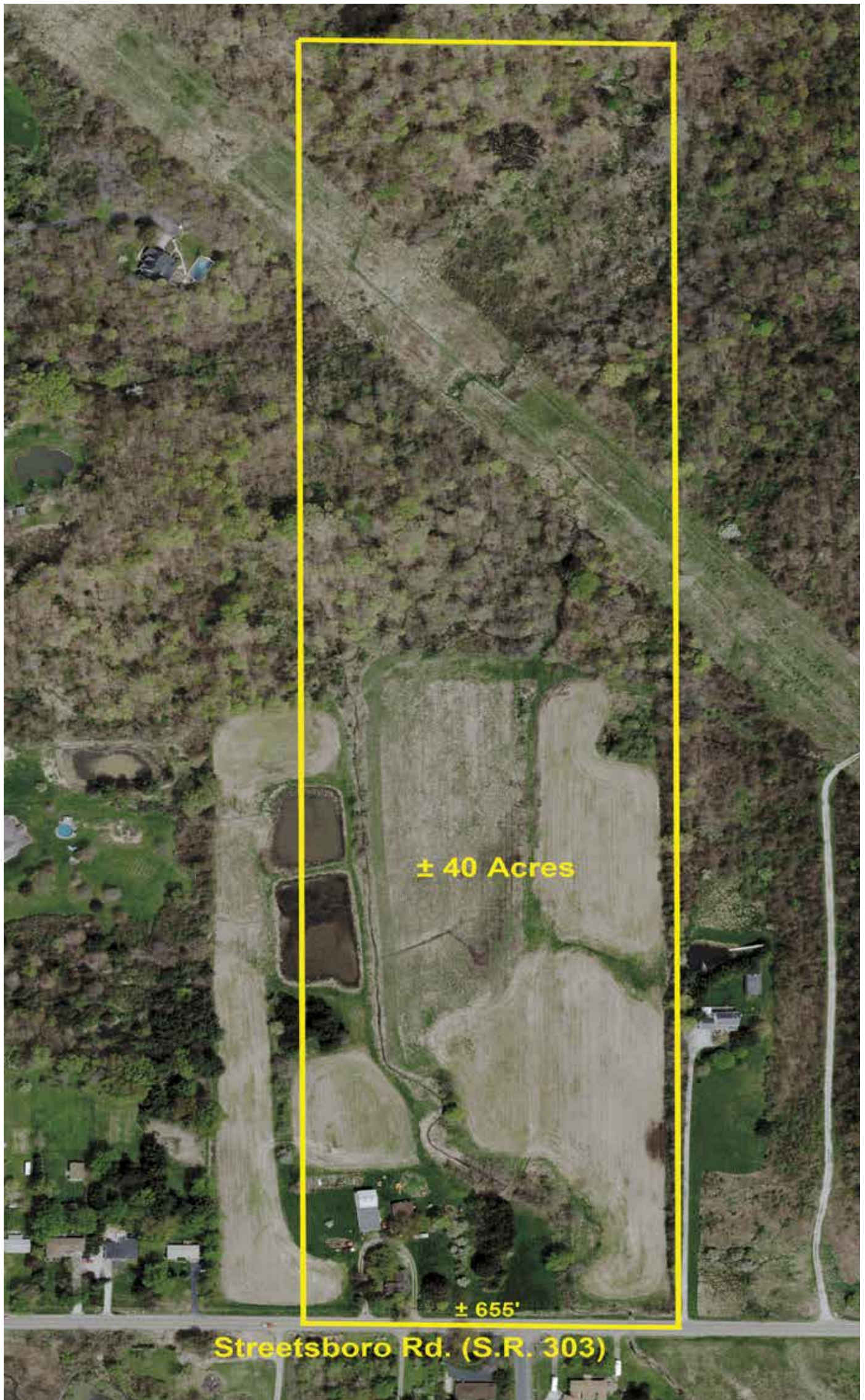
Auction By Order Of:

United States Bankruptcy Court. Case #16-40244-TNAP

Information is believed to be accurate but not guaranteed. KIKO Auctioneers

800-533-5456 | kikoauctions.com





Auctioneer/Realtor®
RANDALL L. KIKO
330-831-0174
randall@kikocompany.com

800-533-5456 | kikoauctions.com

